



This document is designed to provide step-by-step instructions for downloading Minecraft Maps from the Crafting the Past website. To use the maps, you will have to have a copy of Minecraft installed on your computer. **If you don't have Minecraft already installed, please visit <https://www.minecraft.net> to install before downloading a map.**

If you have any problems downloading the maps, please contact us at [info@craftingthepast.co.uk](mailto:info@craftingthepast.co.uk).

### Downloading Crafting the Past Minecraft Maps

**Step 1** - Open the Crafting the Past resource library here: <https://www.craftingthepast.co.uk/downloads>

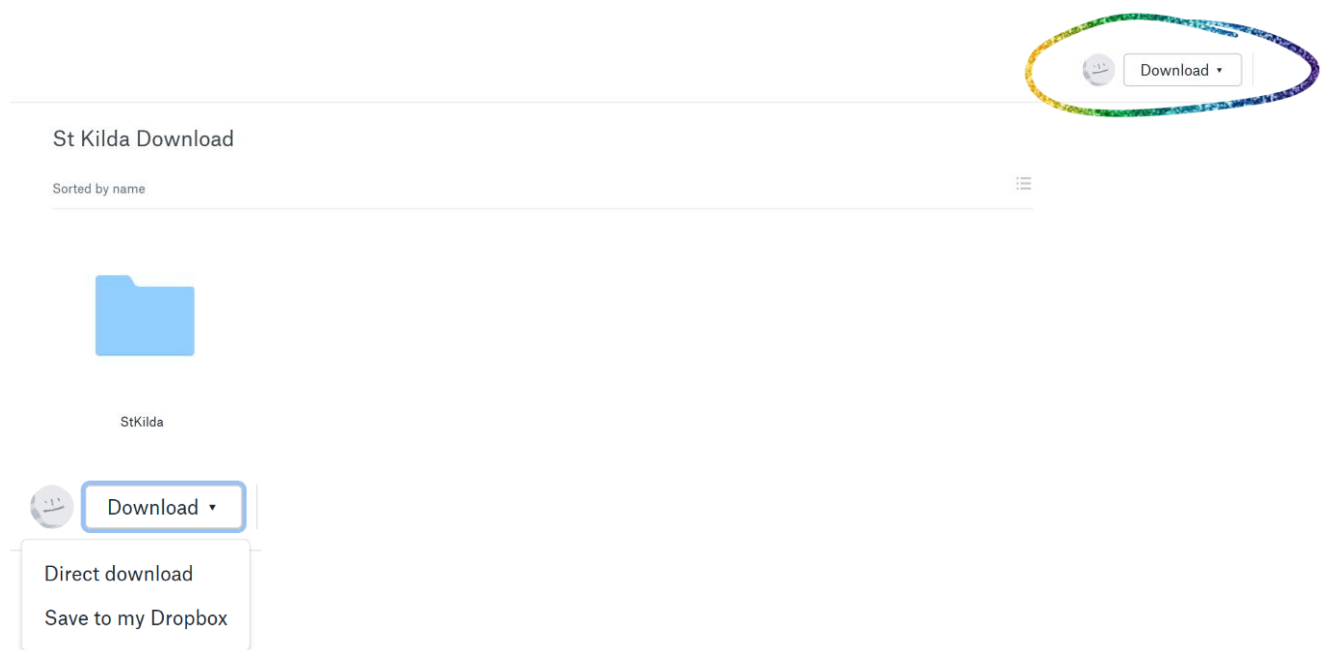
**Step 2** - Select the resource you wish to download and explore. This will open a page dedicated to that resource specifically.

**Step 3** - Click the '**Download**' button on that page to download the specified map.

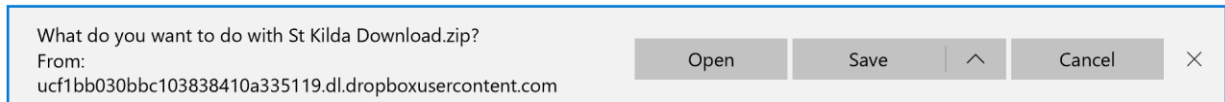


This will open a Dropbox folder containing the files you need. These files are in a single .zip folder.

**Step 4** - Click the Dropbox '**Download**' button in the top right of the screen and then select '**Direct Download**' the map will start downloading into your downloads folder.



**Step 5** – You will be prompted to ‘Open’ or ‘Save’ the file, at the bottom of the screen. Choose ‘**Save**’.

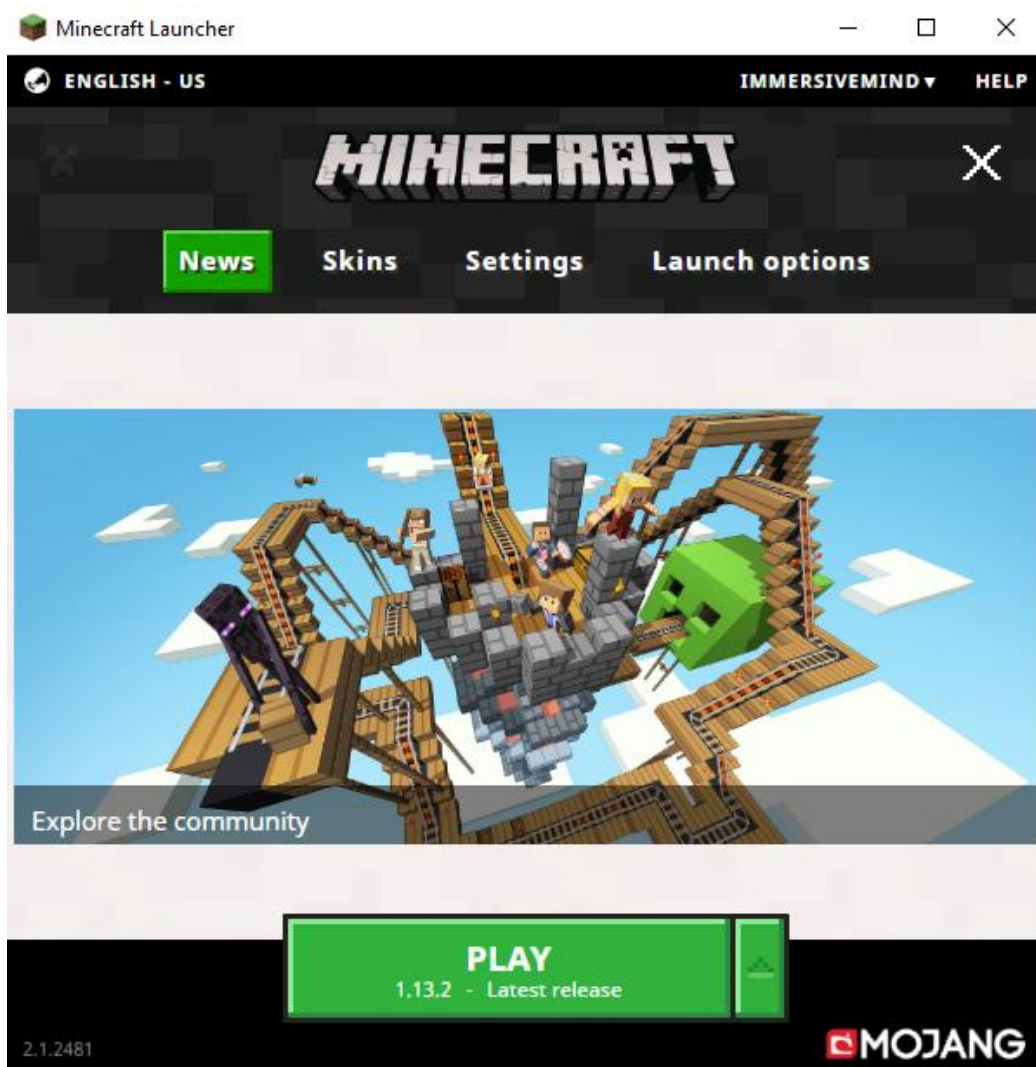


**Step 6** - Once the download has finished, navigate to where it has been downloaded to. Commonly this is your Downloads folder, though you may have this set to Desktop or somewhere else.

**Step 7** - Right click on the downloaded .zip file and select ‘**copy**’ to copy the file ready for placement in the game files.

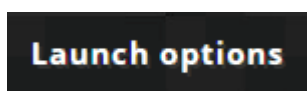
**Step 8** - Open Minecraft Java Edition and click ‘**Play**’

This will launch a small launcher screen:

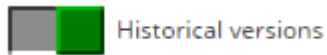


Note: Our maps are designed to work up to version 1.12. To begin, you will have to load that version. A small download that can be done from the launcher.

**Step 9** - Click the ‘Launch Options’ button at the top right of this window.



**Step 10** - Slide the 'Historical Versions' button to the right, so it turns green.



**Step 11** - Click the 'Add New' button near the top left.



**Step 12** - Name your new setting 'Crafting the Past'.

Name	<input type="text" value="Crafting the Past"/>
------	--

**Step 13** - Select 'release 1.12.2' in the next drop down menu box.

Version	<input type="text" value="release 1.12.2"/>	Download server
---------	---	-----------------

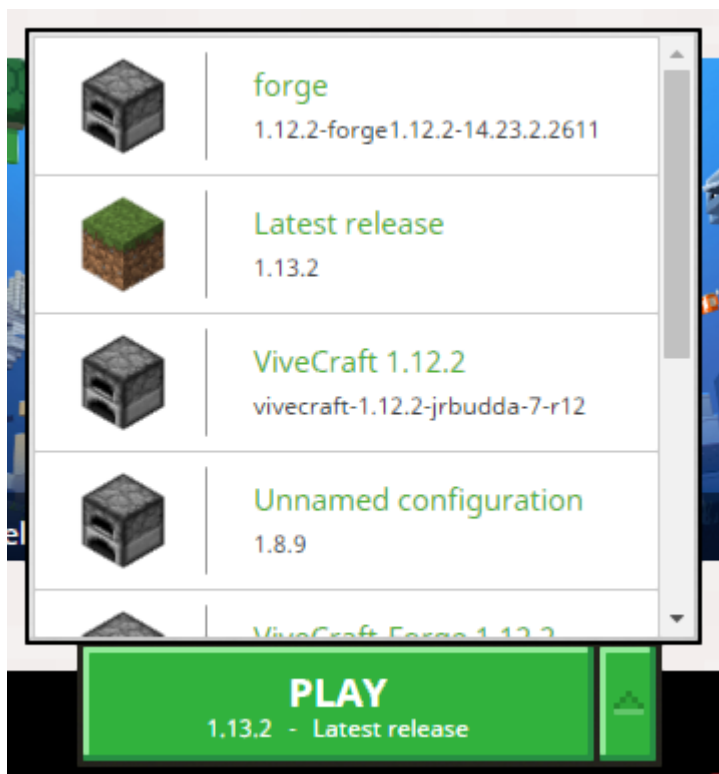
'Save' button at the bottom.



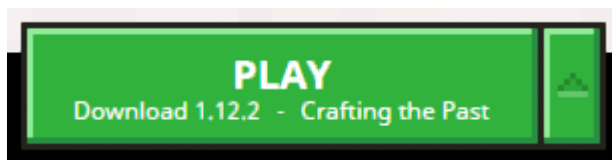
**Step 14** - Click the 'News' button at the top right to return to the game launch menu.



**Step 15** - Click on the small arrow to the immediate right of the 'Play' button at the bottom.



**Step 16** - Search the list and select your 'Crafting the Past' setup.



This will require a small download the first time you do this. After this, you simply need to make sure you start on this setting each time you load. This should default to this unless you change it.

**Step 17** - At the main menu, click 'Options'.



**Step 18** - Click 'Resource Packs'.

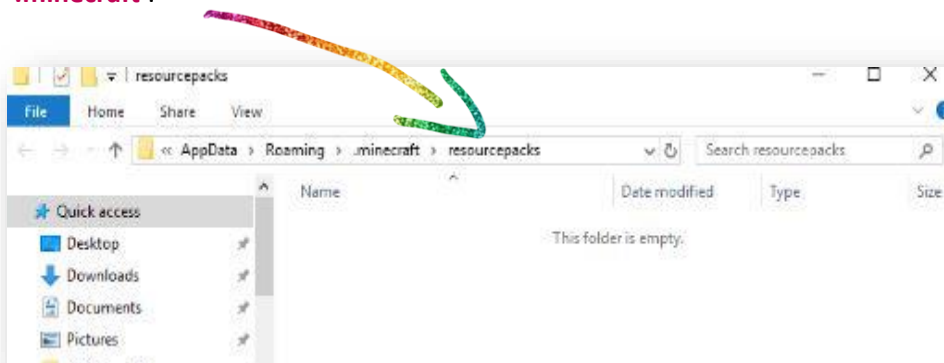


**Step 19** - Click **'Open Resource Pack Folder'**.

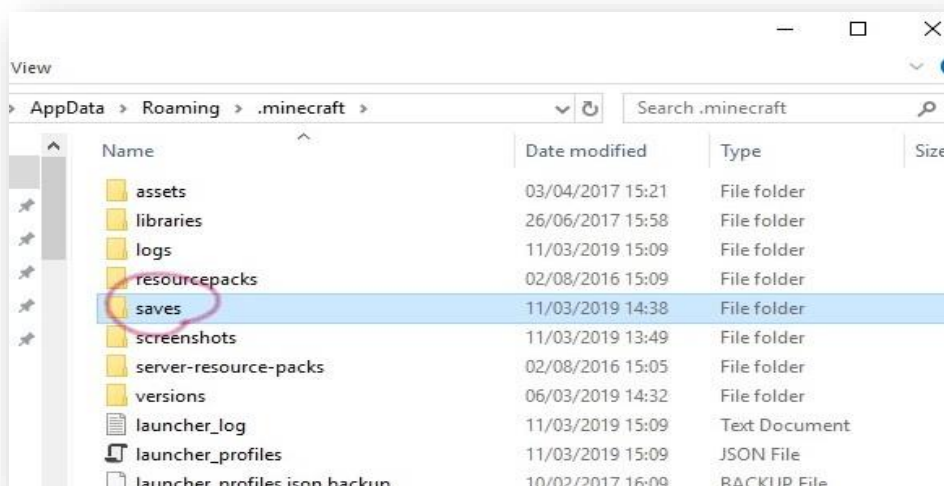


This opens a folder structure containing the game files.

**Step 20** - At the top of the open folder, find the folder structure path and click back a step to **'minecraft'**.

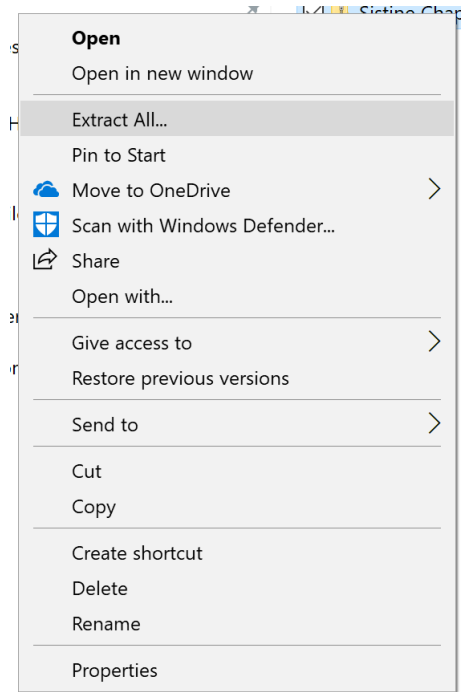


**Step 21** - Double click the **'saves'** folder.

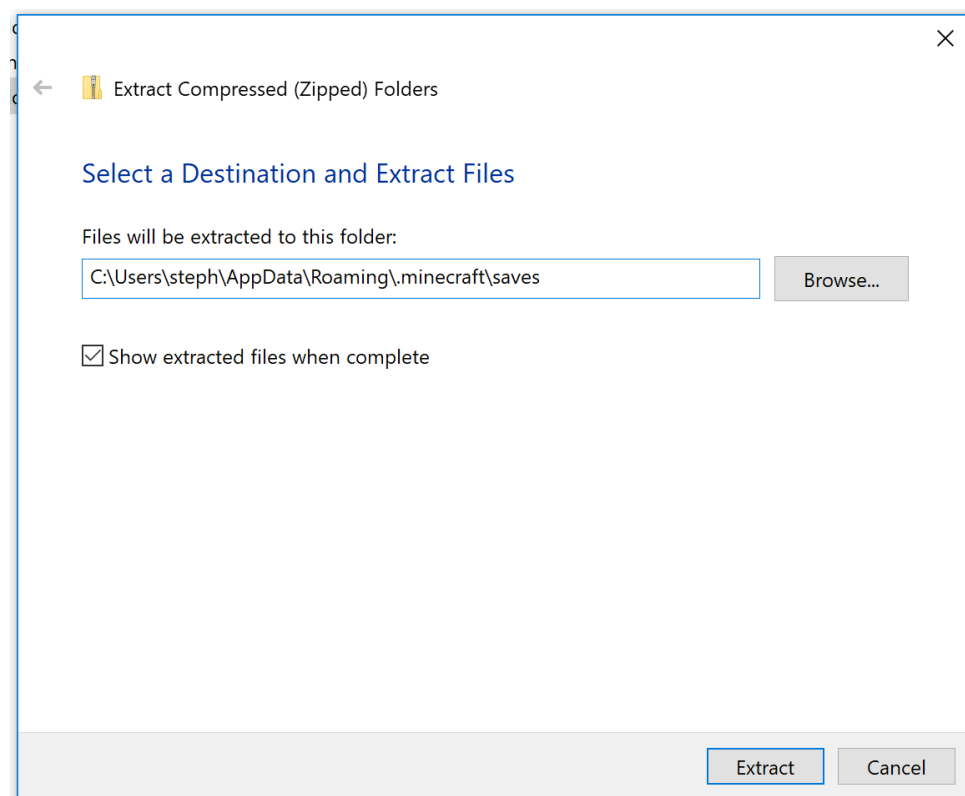


**Step 22** - **'Paste'** the .zip file that you copied in Step 7 inside the **'saves'** folder.

**Step 23** - You will need to '**Extract**' the files held within the .zip files before Minecraft can understand them. Do this by right clicking on the .zip file and selecting '**Extract All**'.



**Step 24** - When given a choice of where to extract the files to, remove the end of the file path in the centre box, so that the last word is 'saves'. (your files path will be slightly different from the one below).

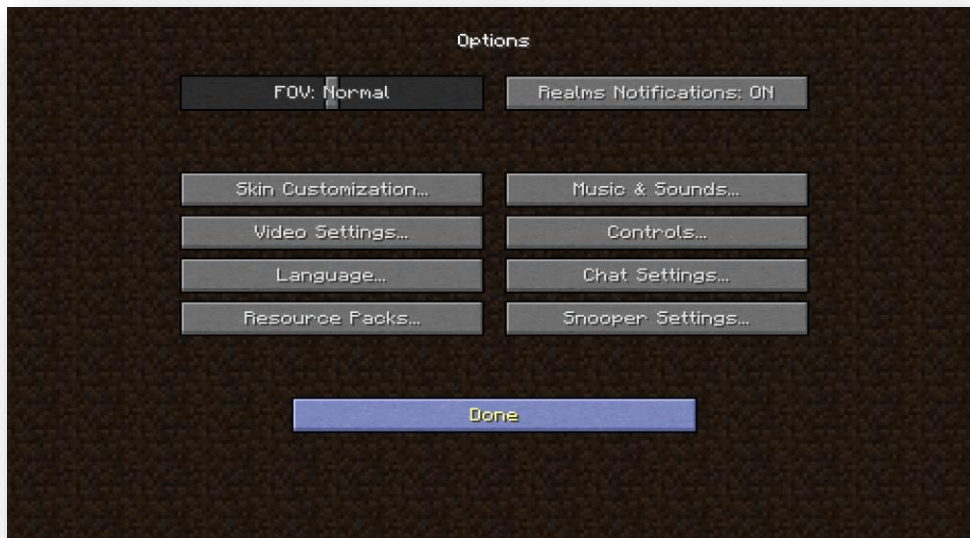




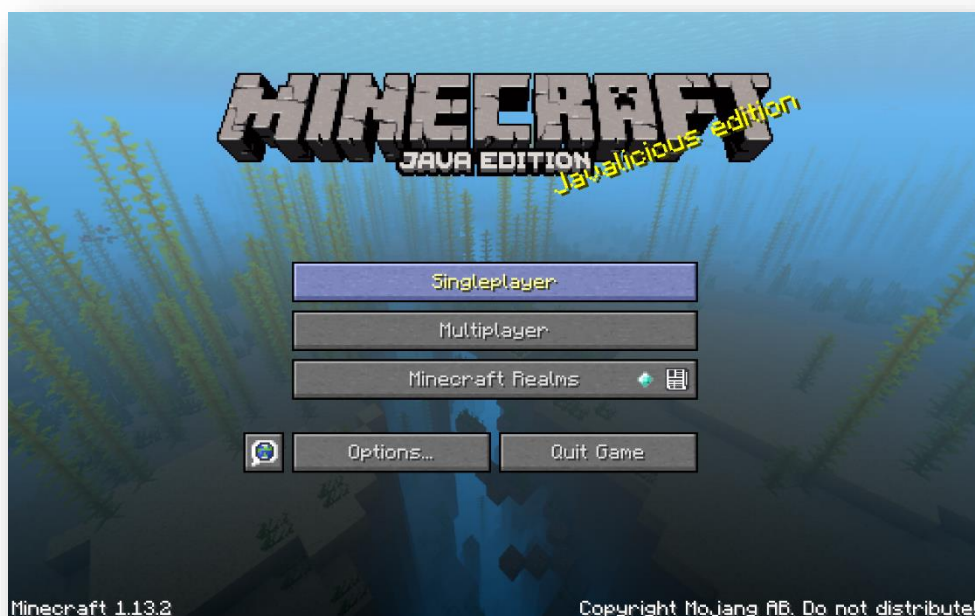
**Step 25** - Close the file structure box and click **'Done'**.



**Step 26** - Click **'Done'** again.



**Step 27** - To start playing the game, click on **'Singleplayer'**.



**Step 20** - Click on the map you downloaded to play and then click '**Play Selected World**'.

Now you can explore your new map!